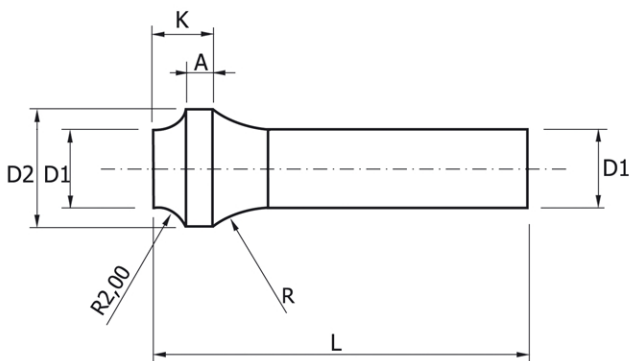


MATERIAL:	Aço Rápido (HSS)
DUREZA CABEÇA:	50 ± 5 HRC
DUREZA DE HASTE:	60 ± 2 HRC
MEDIDAS COMERCIAIS:	Medidas marcadas com a cor cinza



Medidas especiais sob encomenda.

D1 (h6)	D2 -0,10	R -0,20	K +0,20	A Ref.	L +1,00
5,0	7,0	10,0	4,0	1,5	Especificação do usuário até 100mm
6,0	9,0				
7,0	10,0				
8,0	11,0	12,0			
9,0	13,0				
10,0	14,0	15,0			
11,0	15,0				
12,0	16,0				
13,0	17,0				
14,0	18,0				
15,0	19,0				
16,0	20,0				